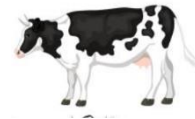


## TECHNICAL DATA SHEET

# Chol C 25%



Product Code: ZT-MC-0001

Encapsulated Choline Chloride (Choline Chloride, 3a890)

For use as animal feed premixture according to Reg. EC 1831/2003, and Reg. 642/2013

### Product Specification

**Appearance:** White to Off-white, free – flowing spheres

**Substrate Composition** Choline Chloride

**Substrate Content:** 25% Choline Chloride (250,000 mg/kg)

**Particle Size:** maximum 2,0% >2,00 mm

CholC25 meets all EU feed hygiene requirements. CholC25 respects current applicable EU regulation regarding undesirable substances in animal feed. CholC25 is in compliance with current EU regulations for non-GM material. No animal product or animal byproduct is used in the manufacturing process. This material is therefore free of risk for BSE/TSE.

**Application:** Encapsulated Choline Chloride, used as e feed premixture for ruminants.

*Do not use as complete feed.*

**Target:** Management of transition period and fatty liver syndrome

**Mode of action:** Choline, as one of the most researched additive in feed industry, proved to help managing natural occurring negative energy balance condition by increasing the amount of VLDL available at liver site so to reduce fat deposit, fatty liver syndrome and post partum metabolic diseases associated with.

**What to expect:** Better hepatic functions, more milk production, less incidence of metabolic diseases.

**Ingredients:** Hydrogenated Vegetable Oil, Technological additives Silica

**Additives:** Choline Chloride (3a890 nutritional additive, 250 g/kg)

**Feeding rate:** 50 – 100 grams / head / day along transition period (21 days pre – 21 days post partum )

**Precautions:** Avoid contact with eyes and skin. Avoid breathing dust. Wash thoroughly after handling.

**Storage:** Keep dry in sealed bags. Store below 50°C.

Recommended storage temperature 10° – 32° C.

**Packaging:** 25 kg paper bags

**Shelf life:** Best if used within two years from date of manufacture, if kept dry in unopened bags.

**Manufactured by:** Made in Italy